

PROFILLIO L1

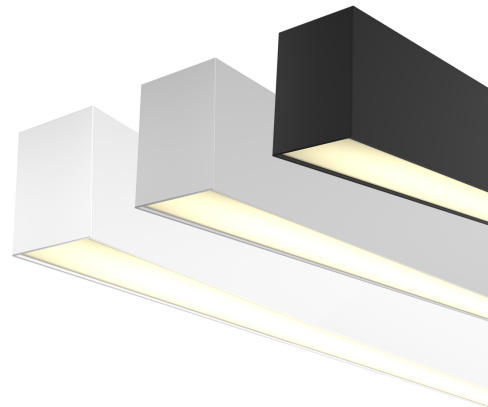
Custom LED Profile

The Profillio L1 is a custom made profile that is suitable in both commercial and residential applications for either feature or task lighting

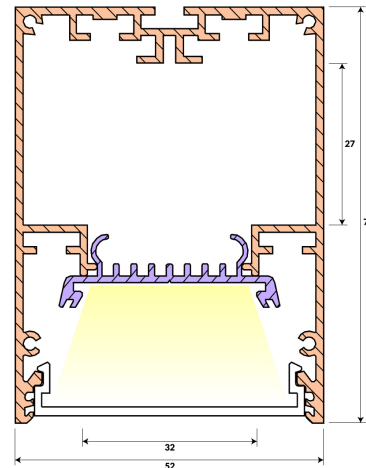
Specifications

Input Voltage	220-240VAC @ 50/60Hz
Driver	Included
Efficacy	100 lm/W
SMD Brand	EPISTAR
Application	Surface Mount / Suspended
Material	6063 Extruded Aluminium
Diffuser	Opal/Frost PMMA
CRI	> 80
Lifetime	> 50,000 hours
Dimmable	Optional
Cut Length	25mm
Warranty	3 Years**

**Profile not to be used in outdoor applications
Custom cuts up to 3 metres but sold per metre



Dimensions



Options & Accessories



White Finish



Aluminium Finish



Black Finish



Suspension Kit

Order Code	Finish	Wattage	Colour Temperature	Driver Type
PROFILLIOL1				
	AL Aluminium	192 19.2W/M	WW 3000K Warm White	N NON Dimmable
	BK Black	288 28.8W/M	CW 4000K Cool White	T TRIAC Dimmable
	WH White	480 48.0W/M		D DALI Dimmable



Read more